

TECHNICAL DATA SHEET: MARCO Dining Table

DIMENSIONS:

Width:	Depth:	Height:	*Dimensions are adjustable
240 cm	100 cm	75 cm	

The Marco dining table is defined by two gracefully curved elements that form its sculptural foundation. Like a gentle embrace, they create a sense of volume while providing exceptional stability.

The tabletop is available in HPL or solid wood—choose from Iroko, Oak, or Beech—and can be finished in a wide range of wood tones to perfectly complement your dining setting. A refined piece that brings warmth, sophistication, and timeless style to any interior.



MATERIALS:

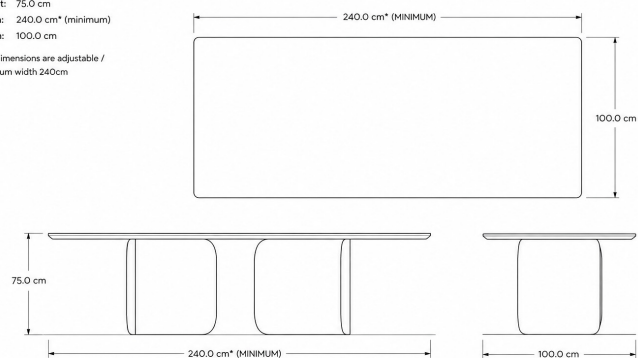
Solid wood angled base with adjustable top in HPL or Ceramic or Solid Wood

TECHNICAL SPECIFICATIONS:

DINING TABLE – TECHNICAL DRAWING

Height: 75.0 cm
 Width: 240.0 cm* (minimum)
 Depth: 100.0 cm

*Top dimensions are adjustable / minimum width 240cm



NOTES:
 • All dimensions are in centimeters (cm).
 • Dimensions are approximate and may vary slightly.
 • Top dimensions are adjustable, minimum width is 240 cm.

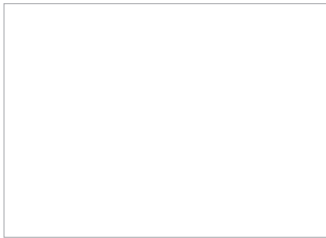
KEY FEATURES:



CERAMIC COLOR VARIATIONS:



HPL TOP COLLECTION



3103



5054



1467



869



5056



5058



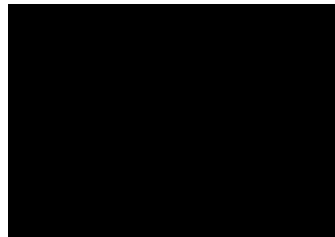
546



669



5156



3190



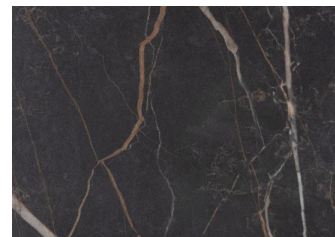
1464



1452



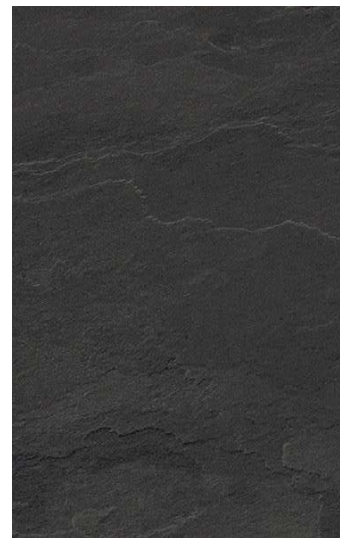
3327 PORFIDO CHIARO



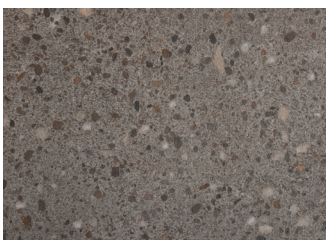
3482 SAMAS URBAN



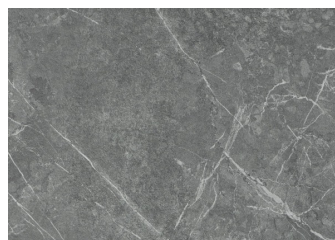
2810



2853



3379 ATENA GRIGIO



3522 MARMO GUATEMALA