

TECHNICAL DATA SHEET: IKON Dining Table

DIMENSIONS:

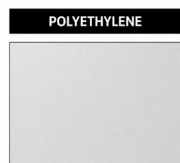
55 (Diameter) x H71 cm *Dimensions are adjustable

The Ikon dining table embodies architectural elegance through its simple, refined design. Featuring a conical polyethylene base that can be filled for added stability, it is available with round tabletops in a range of sizes, materials, and finishes. Strong yet versatile, the Ikon dining table is perfectly suited for both indoor and outdoor dining settings.

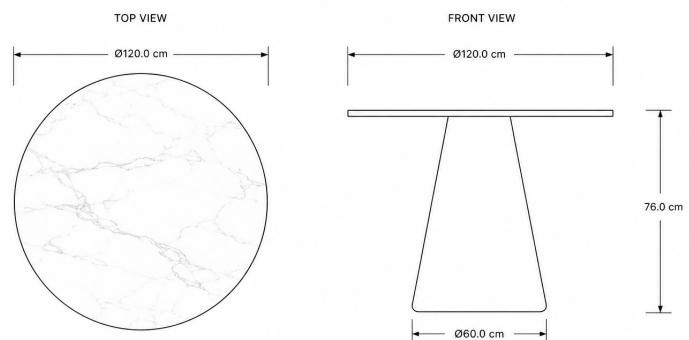


MATERIALS:

Polyethylene cylindrical base with adjustable top in HPL or Ceramic



TECHNICAL SPECIFICATIONS:



DIMENSIONS

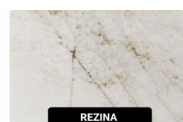
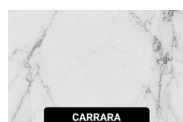
Height:	76.0 cm
Width:	120.0 cm (Diameter)
Depth:	120.0 cm (Diameter)

*Dimensions are adjustable

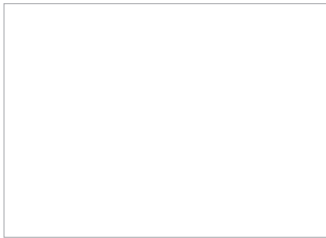
KEY FEATURES:



CERAMIC COLOR VARIATIONS:



HPL TOP COLLECTION



3103



5054



1467



869



5056



5058



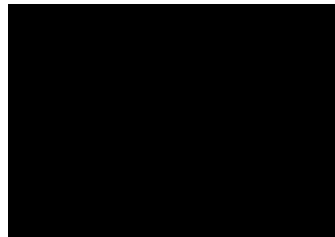
546



669



5156



3190



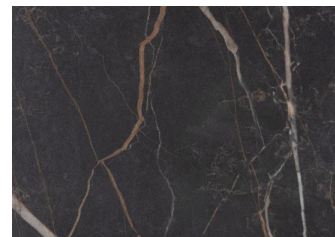
1464



1452



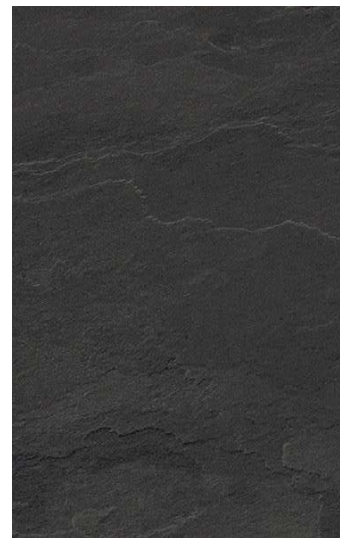
3327 PORFIDO CHIARO



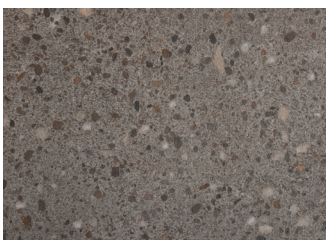
3482 SAMAS URBAN



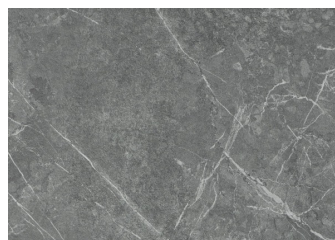
2810



2853



3379 ATENA GRIGIO



3522 MARMO GUATEMALA